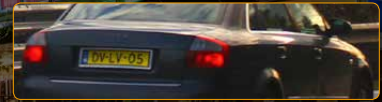


# MICROCAM

IP CAMERA DESIGNED FOR ON-THE-MOVE  
LICENSE PLATE RECOGNITION

ANPR RESULTS

DV-LV-05



- NUMBER PLATE: DV-LV-05
- NATIONALITY: EU-NEDERLAND
- RECOGNITION DATE: 2018-07-01  
23:19:19+00:00
- BLACKLIST: NO



## MOBILE ANPR/LPR CAMERA

**MicroCAM** performs on-the-move license plate recognition – in the same quality as a fixed high-end ANPR camera. MicroCAM doesn't want you to make a compromise: it offers the best of both worlds. The on-board image-based Vehicle Detection algorithm creates an event for each passing vehicle. Up to now, something almost impossible by an ANPR camera that catches plates while you are driving.

MicroCAM's compact design was created with portability in mind. The camera can be easily mounted on a rooftop of a patrol car or placed behind the front or rear window. The camera uses a single POE+ connector, which makes the installation quick and straightforward. Pick the wide-angle lens or the long-range lens – according to your preferred use. MicroCAM M402 runs the world's No.1 plate recognition engine: Carmen® ANPR.



### MAIN BENEFITS

- Operates ANPR technology from a moving vehicle
- Runs proven, field-tested, unrivalled Carmen® ANPR engine
- Processing speed/volume optimized by Vehicle Detection
- Durable weather-proof housing
- Easy mounting on patrol cars with single cable connection
- Results saved or transferred to a predefined database

TOWARD THE FUTURE IN SAFETY – SINCE 1991

## SPECIFICATIONS

ARH M402

- On-the-move ANPR • Rooftop/dashboard camera • Vehicle Detection • single cable (PoE+) connection • Quick auto brightness
- CARMEN® ready • ONVIF compliant

Production Code	M202 FHD	M202 FHD WIDE	M402 FHD	M402 FHD WIDE
	MicroCAM-02-4330 (IR850) MicroCAM-02-4338 (IR760)	MicroCAM-02-4390 (IR850) MicroCAM-02-4398 (IR760)	MicroCAM-02-4430	MicroCAM-02-4490

### DISTANCE RANGE

	M202 FHD	M202 FHD WIDE	M402 FHD	M402 FHD WIDE
Optimal ANPR range at ambient light	8 m – 15 m (26.2 feet – 49.2 feet)	1 m – 4 m (3.3 feet – 13.1 feet)	8 m – 15 m (26.2 feet – 49.2 feet)	1 m – 4 m (3.3 feet – 13.1 feet)
Maximal ANPR range at optimal conditions	20 m (65.6 feet)	5 m (16.4 feet)	20 m (65.6 feet)	5 m (16.4 feet)

### IMAGING

Resolution (H × V pixels): frame rate	2048 × 1536: 20fps 1920 × 1080: 30 fps			
Day mode / Night mode	Light sensor configurable quick auto-switching day/night mode, automatic brightness control			
Lens	Fixed 16 mm	Fixed 4.5 mm	Fixed 16 mm	Fixed 4.5 mm

### ILLUMINATION

Wavelength	760 nm or 850 nm (infrared)	850 nm (infrared)
Illumination modes	Synchronized flash	

### PROCESSING & I/O

CPU for ANPR	–	ARM Quad Core 4 × 1GHz
Communication protocols	ARP, ICMP, TCP/IP, DHCP, NTP, FTP, HTTP, SMTP, RTP	

### ELECTRICAL DATA

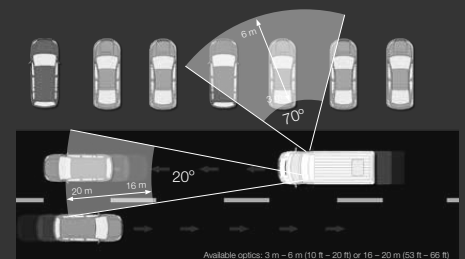
Power requirement	PoE+ (IEEE 802.3at)	
Power consumption (typical)	8 W	12 W
Connectivity	Single cable PoE+ connector	

### ON-BOARD INTELLIGENCE

CARMEN® ANPR	–	Included
Video Analytics (Motion Detection, Private Zones)	Included	
Trigger sources	Video Analytics / Software trigger (controlled via HTTP or HTTPs request)	

### MECHANICAL DATA

Operating temperature	-30 °C – 70 °C (-22 °F – 130 °F)*
IP rating	IP67
Dimensions (without bracket) l × w × h	183 mm × 160 mm × 96 mm (7.2" × 6.3" × 3.8")
Weight (without bracket)	1.6 kg (3.52 lbs.)
In the box	Camera with 5 m cable, bracket, shield.



### OPTIONAL ACCESSORIES

I/O cable	
-----------	--

\*internal temperature / ambient temperature: max. 55 °C (131 °F)



ADDRESS: ALKOTAS UTCA 41, H-1123 BUDAPEST, HUNGARY, EU  
 PHONE: +36 1 201 9650 • FAX: +36 1 201 9651 • EMAIL: SENDINFO@ARH.HU  
 WWW.ARH.HU

Technical specifications are subject to change without prior notice. This document does not constitute an offer.